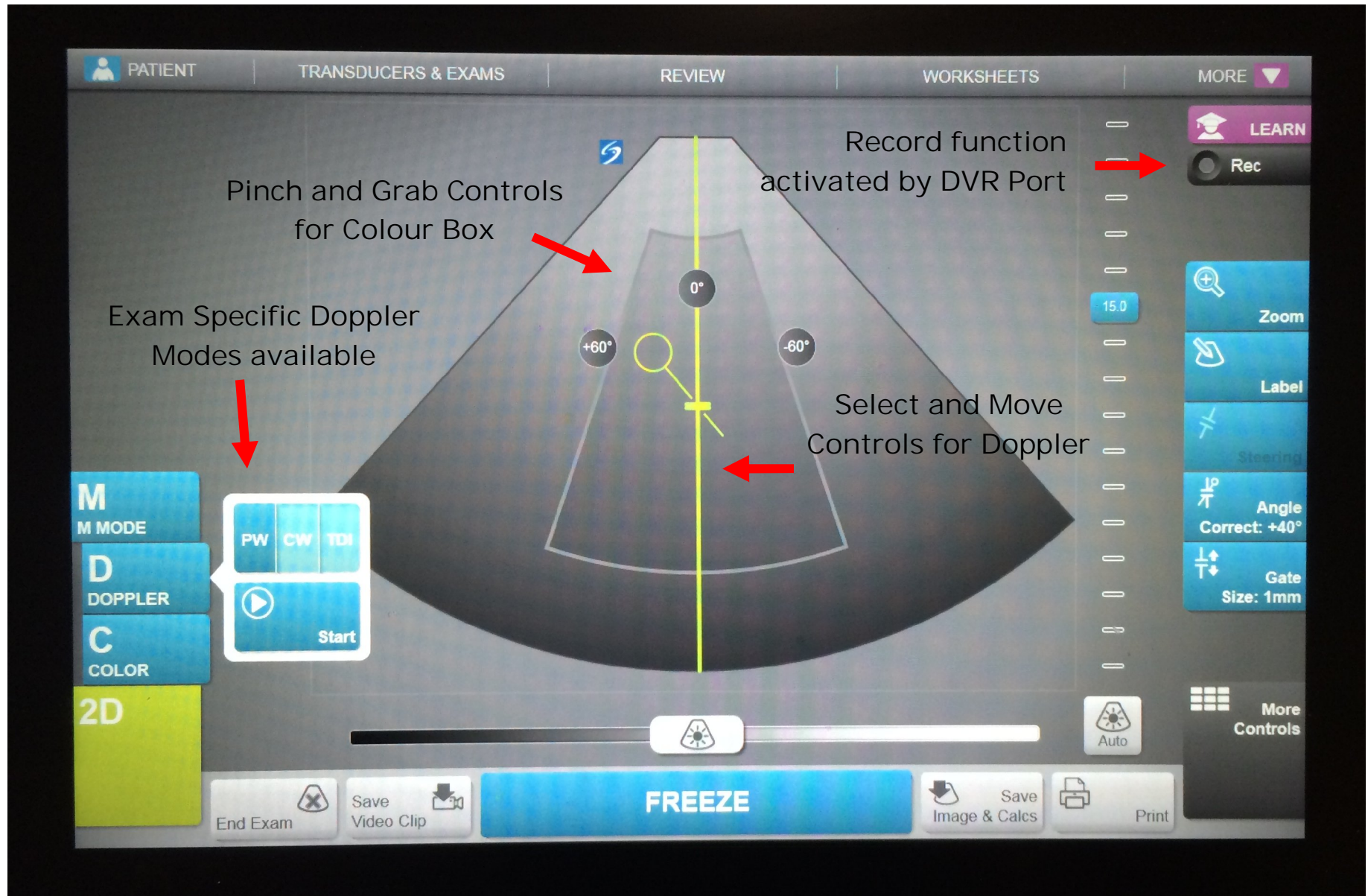
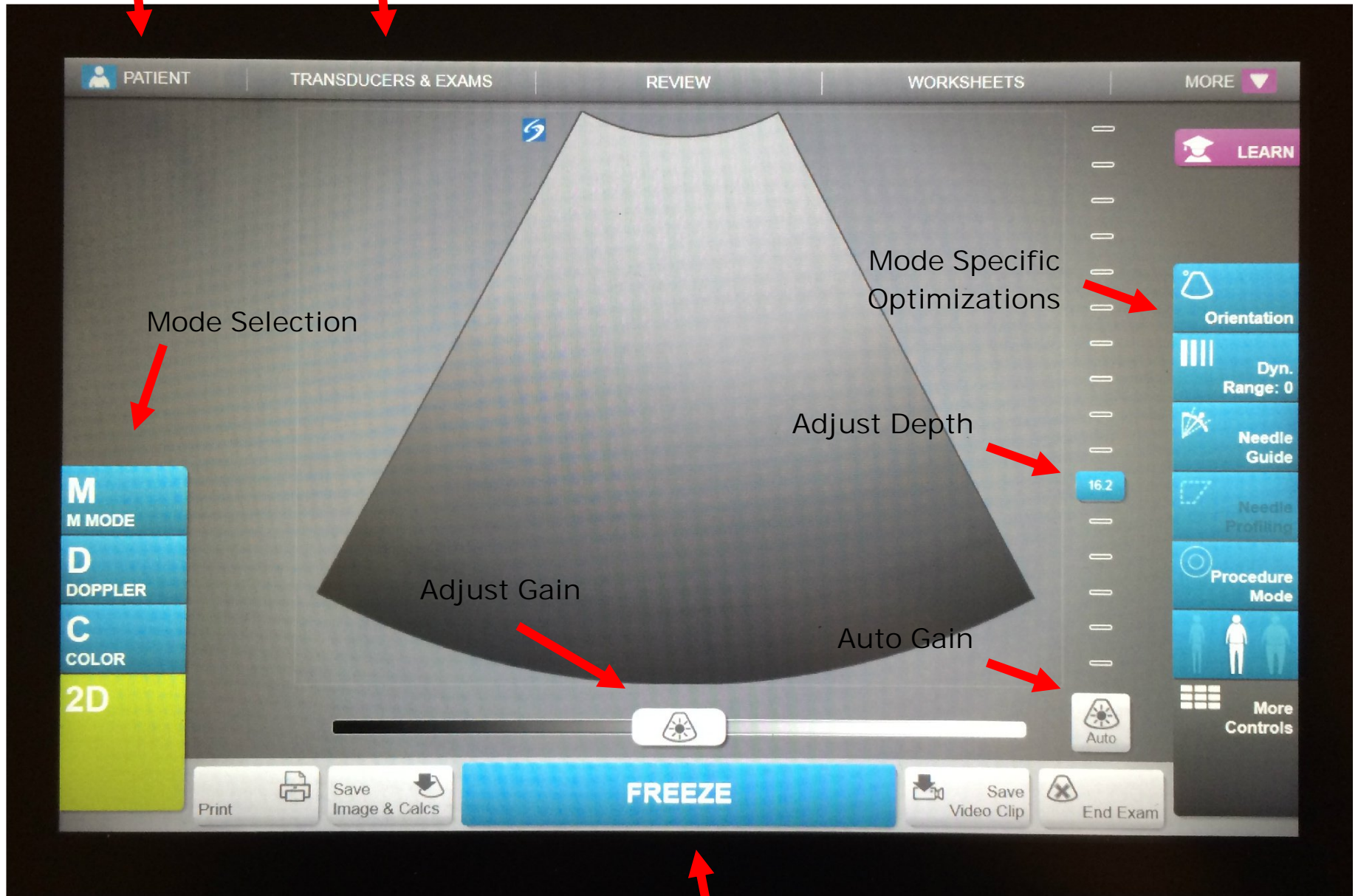


Choose Colour/Doppler or M Mode to activate. The functions will become active and are controlled by touch



\*optimization and save/end exam keys are customizable and may be in different locations based on user configurations

Enter Patient Data    Choose Transducer and Exam



Mode Selection

Mode Specific Optimizations

Adjust Depth

Adjust Gain

Auto Gain

Freeze, Save Images and Clips and End Exam

\*optimization and save/end exam keys are customizable and may be in different locations based on user configurations